



# 9th Annual Shelter Academy 2019 Case Study Presentation

**MALEBOGO KRUGER**

**HER WORSHIP THE MAYOR,**

**LOBATSE TOWN COUNCIL, BOTSWANA  
MOTSWANA**



# BOTSWANA

- ❑ A land locked Country in Southern Africa
- ❑ Sparsely populated pop of 2,2 million-2011
- ❑ 2,306 72-2019 in 2019 (2.2 % increase)
- ❑ Area coverage: 587 000 km<sup>2</sup>
- ❑ Pop density 3.96 people/km<sup>2</sup>
- ❑ Urban Population: 21.76 % of the total population
- ❑ GDP: \$4,627,464.52
- ❑ GDP/Capita: \$2,838.22
- ❑ Poverty levels; 19. 3%
- ❑ Extreme Poverty: 6.4 %



---

# Poverty Levels

**Table 2: Poverty Incidence by District and Sub-district level**

Census District	SCVS 2009/10		BMHS 2015/16	
	Poverty Headcount (%)	Number of Poor Persons	Poverty Headcount (%)	Poor Population
Gaborone	6.1	11,702	7.7	18,395
Francistown	7.9	7,675	12.4	11,267
Lobatse	14.9	5,191	9.8	2,346
Selibe Phikwe	14.2	6,241	10.4	5,552
Oropa	0.0	0	17.5	1,669
Jwaneng	3	352	9.1	1,715
Sowa Town	6.8	240	5.0	149
Ngwaketse/Southern	17.6	19,889	17.7	21,171
Barolong	24.2	10,821	13.7	7,388
Ngwaketse West	41.7	3,925	40.3	5,446
South East	13.4	10,215	8.1	7,260
Kweneng East	17.8	45,557	15.8	47,115
Kweneng West	32.4	16,134	50.6	26,517
Kgatleng	19.5	16,209	8.4	7,956
Central Serowe	27.4	43,076	11.6	21,414
Central Mahalapye	17.5	21,797	18.2	24,556
Central Bobanong	32.8	25,385	13.9	8,983
Central Boteti	29.8	15,795	12.9	7,483
Central Tlofene	18.9	28,735	21.2	30,444
North East	20.2	12,690	7.2	3,457
Ngamiland East	22.6	14,259	21.6	22,836
Ngamiland West	46.2	25,144	33.4	21,141
Chobe	2.2	324	19.3	4,708
Ghanzi	26.0	10,525	36.3	16,356
Kgalagadi South	16.9	5,289	39.5	9,862
Kgalagadi North	23.9	4,946	13.4	2,225
<b>National</b>	<b>19.3</b>	<b>342,116</b>	<b>16.3</b>	<b>337,410</b>

# BOTSWANA

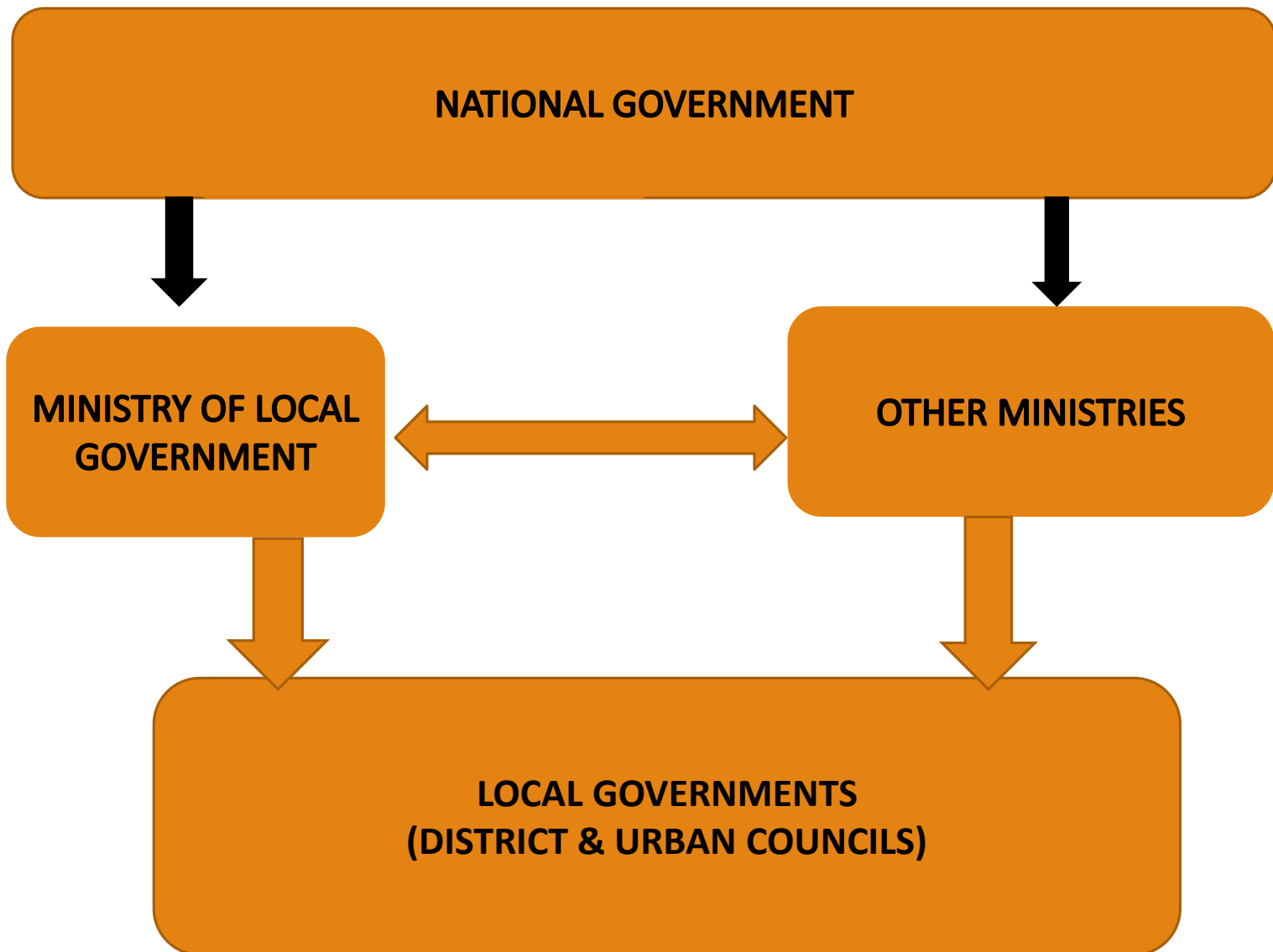


# Systems of Government

---

## ❑ Political System

- ❑ Botswana is a democratic republic with a two-tier system of government being
- ❑ National government headed by the president
- ❑ Local Government headed by a mayor in towns/cities and a council chairperson in rural districts.
- ❑ No constitutional provision for local government in Botswana, and the main legislation is the Local Government Act 2012.
- ❑ The Ministry of Local Government and Rural Development is charged with providing policy direction and guidance.
- ❑ Local government comprises 16 administrative districts (ten rural and six urban).
- ❑ Botswana is also known for its consultative institutions to promote participatory democracy at the grass roots level.
- ❑ These are the kgotla and the Village Development Committees (VDCs).



# Country's data specifics

---

- ❑ The world's largest producer of diamonds and the trade has transformed it into a middle-income country
- ❑ Botswana protects some of Africa's largest areas of wilderness. 38% of its total land area are devoted to national parks, reserves and wildlife management areas.
- ❑ The Kalahari Desert, home to a dwindling band of bushman hunter-gatherers
- ❑ Semi Arid & Dry. Drought is a recurrent phenomenon, and most rivers are seasonal, hence water is a very scarce resource.
- ❑ Sparsely populated and The population is concentrated in the eastern parts of the country where arable farming is feasible on account of better and more favourable climatic and soil conditions.



Okavango Delta



Boat cruising along Chobe River



Chobe River, Tourista destination



Open Pit Diamond Mining

# Urban Development in Botswana

---

- ❑ It was only after the discovery and exploitation of diamonds, copper and nickel in the late 1960s that urbanization actually gained momentum in Botswana
- ❑ In terms of the planning and development of settlements, the government in 1972, established the Department charged with the responsibility of urban planning (
- ❑ In 1977 (Revised 2013) the first planning law was enacted
- ❑ The T&CP act 2013 gives responsibility to Local Govts as the Planning Authorities
- ❑ No urbanization Policy to guide urbanization
- ❑ There is a national spatial plan to guide economic development
- ❑ Resistance to transform to densification of Land leading to promotion of Urban Sprawl

# Urban Development Challenges in Botswana

---

- ❑ Un-diversified economy, largely dependent on Natural resources (minerals, & Tourism)
- ❑ Poverty remains a challenge in Botswana
- ❑ Countries has not been spared from the Climate Change effects. It climate change reverses the development gains already made.
- ❑ Effects experienced in various economic sectors
- ❑ Agriculture, Water, Energy, Natural resources
- ❑ Infrastructure development with devastating socio-economic repercussions
- ❑ Vulnerability of the Country's population worsened by a combination of social, environmental & economic
- ❑ Drought, extreme temperatures, flooding risks,
- ❑ The Country is working on the National Change Response Policy, which will soon be endorsed and rolled out, together with the National Strategy



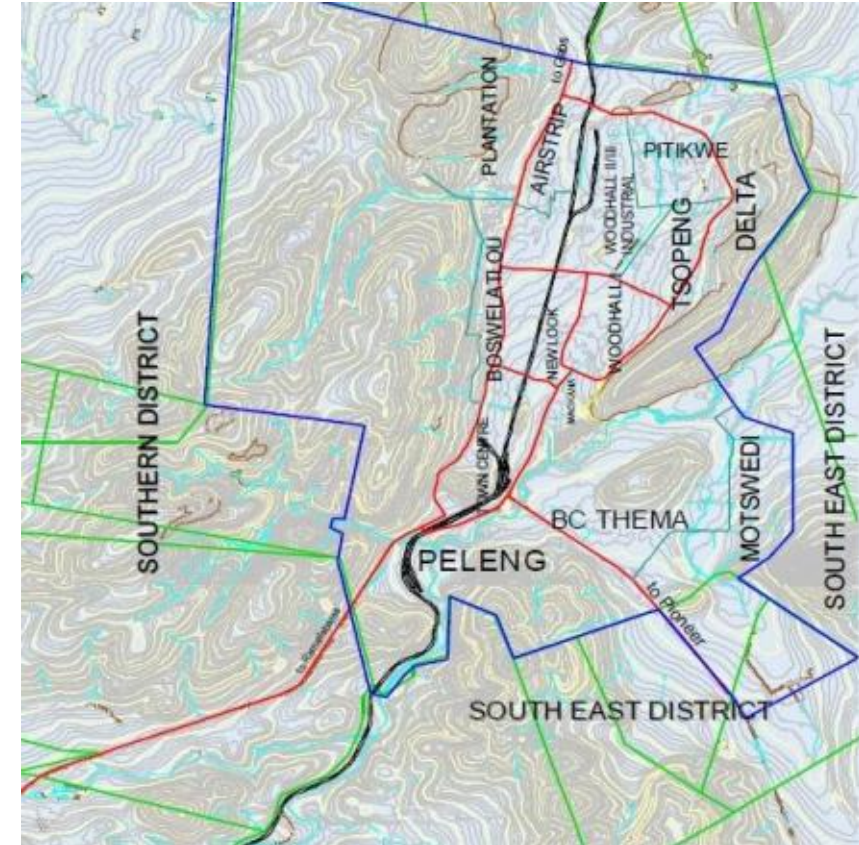
Damages caused by Cyclone Dineo



Road linking Lobatse to Gaborone & other centres destroyed

# CASE STUDY, LOBATSE

- ❑ Population Size- 28,689
- ❑ In-migration rate; 11.8 %
- ❑ 1<sup>st</sup> capital city of the then Bechuanaland Protectorate
- ❑ Located in a Valley, surrounded by hills
- ❑ Area coverage/Size: km<sup>2</sup>
- ❑ Land developed/total Area-
- ❑ Pop Density: 690/km<sup>2</sup>
- ❑ Urban Slum Population: 7, 252
- ❑ Poverty levels: 9.8%
- ❑ Budget: Govt as the main source (90%) and 10% from own source of revenue (service fees)
- ❑ Major sources of Income- Informal sector, Retail,



# Case study in pictures

---



Lobatse



Areal view of Peleng area, Lobatse

# Lobatse Profile in Pictures



Lobatse Bus Rank



Commercial Node



Meat Industry



Sugar Industries



Clay Bricks Industry

# Case study Profile pictures

---



Town Scenic View



Town Scenic View

# Urban Development Challenges in Lobatse

---

- ❑ A statutory body, non profit making,
- ❑ Established under Local Govt Act 2012
- ❑ Exists to provide basic social services and physical Infrastructure, public finance management, Planning Authority
- ❑ The town's economy depends on Industries (Industrial Town)
- ❑ More big industries upcoming-Leather Park, Special Economic Zone, beef & leather Industry
- ❑ BMC, Clay Industry, Tile Manufacturing, Water Pipe and Storage manufacturing, Car Cables manufacturing, Sugar Industries, Can manufacturing, Canvas Camping equipment Industry, Milk Industry,
- ❑ Increasing poverty levels
- ❑ Decline in the Town's economy due to closure of some industries and poor performance of others
- ❑ Limited funding, which makes it difficult to implement all planned developments
- ❑ Lack/Unavailability of disaggregated Urban data (including spatial ) for Urban Planning purposes
- ❑ Incapacitated (both human & financial resources) to address the urban challenges

# Climate change Related Challenges

---

- ❑ Vulnerability of the Town to Climate Change is worsened by a combination of social, environmental & economic factors.
- ❑ The town geographically Located in a valley & surrounded by hills
- ❑ The hilly terrain makes it difficult to expand or grow, and limits the number of exit and entrance points, a situation that makes it difficult for speedy evacuations in terms of natural disasters.
- ❑ The geo-technical characteristics makes construction to be costly (leading to poor housing structures)
- ❑ Peleng & Woodhall areas highly vulnerable to flooding
- ❑ Lack of Resilient Physical Infrastructure to withstand harsh weather conditions (housing & Storm water drains)
- ❑ Being an industrial town and transit for border heavy traffic, a potential hotspot for GHGs
- ❑ Closing of major industries worsening poverty level, and reducing the Urban Poor's capacity to adapt to Climate Change effects
- ❑ Deforestation & Air pollution - High use of firewood for energy (cooking & Lighting)-Depending on the eco system remains their only option
- ❑ Unfavorable housing conditions worsening, vulnerability
- ❑ Unsustainable consumption patterns from high income areas
- ❑ Poor Waste Management Practices

# Climate change Related Challenges ctd

---

- ❑ Town Authorities remains incapacitated and lacks the mechanism to develop emissions inventories.
- ❑ Lack of a clear policy direction at National and local level, on how Cities can develop affirmative actions to address climate Change mitigation and adaptation,
- ❑ Therefore, the Town cannot get enough support to upscale its efforts in upscaling climate Action at City level.
- ❑ Upcoming economic activities will result in migration which will worsen over crowding in low income areas, Urban Poverty
- ❑ Climate Adaptation measures, by National Government benefits the rural population than the Urban.
- ❑ Incapacitated staff to deal with environmental pollution and Climate Change(Save for a few trained officers)
- ❑ Unavailability of Resilient infrastructure to withstand harsh weather conditions

# Vulnerability in Pictures



**Unsustainable solid waste management practice**



**Blocked natural flows**



**No storm water management Infrastructure**



**Poor Housing standards**

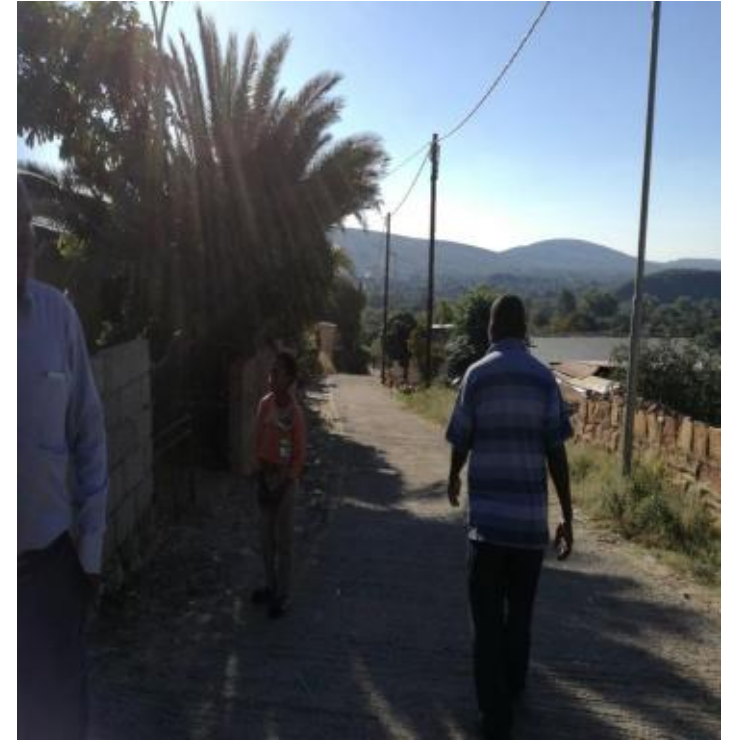




**Limited entry points into the city, making evacuation difficult**



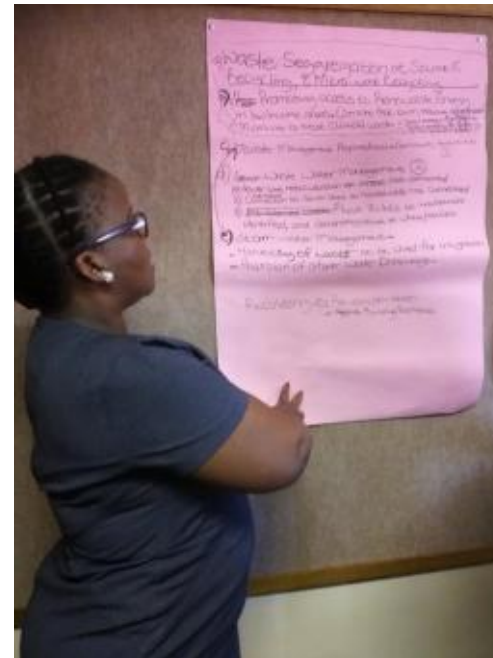
**Use of Firewood for cooking and lighting, promoting deforestation**



**Hilly terrain exposes some households**

# Response to Climate Change Related Challenges

- ❑ The Paris Agreement on Climate Change hasn't been rolled out or localized to Local Authorities level. However, LTC has made a decision to develop Local Climate Action Plans.
- ❑ Started by forming a committee, led by the Principal Urban Planner, to develop an action Plan.
- ❑ Capacity building of the Action Implementing Team
- ❑ Awareness Raising on Climate Change within the Town residents- Campaigns, community mobilization, school Visits
- ❑ Greening the Town, and curbing deforestation (Participatory exercise, one tree per leader
- ❑ Empowering the poor, (employment creation, housing provision- through destitute housing, Participatory sum upgrading)
- ❑ Water-Storm water management-Harvesting of water in Public facilities for re-use, Construction of Storm water management infrastructure
- ❑ Promoting the use of Renewable energy- Provide access to clean renewable energy to the poor, Introduce energy mix in public facilities
- ❑ Enforce Building Control and Urban Planning standards
- ❑ Shift to 'circular economy model' of waste management
- ❑ Strengthening the Disaster Management Preparedness



**Brainstorming on the Climate Change Council Action Plan**

# Response to Climate Change Related Challenges

---

- ❑ Capitalize on the piloting of the Participatory Urban Slum Upgrading
- ❑ Address the slum deprivations to build resilience of the Urban Slum dwellers who are highly vulnerable
- ❑ Planning for integration of Climate Change mitigation & Adaptation, into the upcoming projects
- ❑ be proactive and plan for the sustainable and inclusive development of the Town, with Green growth concept as a guide.
- ❑ Establishment of Partnerships for development of Climate mitigation & Adaptation. Established a partnership with Climate Exploration Hub, Botswana.
- ❑ Currently working on establishing a partnership with University of Botswana to take part in the FRACTAL Project
- ❑ has adopted the Climate Change and green growth concept, which will be mainstreamed into its policies and programmes, to achieve sustainable and inclusive development.

# Response to Climate Change Related Challenges

---

- ❑ LTC has identified new projects which will test and innovative approaches, to upscale climate change efforts
- ❑ LTC has prioritized to pilot one climate change response/action initiative in the Low Income areas of the town.
- ❑ LTC has identified new projects which will test and innovative approaches to protect the environment and its natural resources, create employment and provide access to clean and affordable energy to those households in need, initiatives which are aimed at upscaling the interventions in slum upgrading.
- ❑ ***Upscaling Climate Change Mitigation and Adaptation Action, for inclusive and sustainable Urban Development to improve urban livelihoods.***
- ❑ To close the knowledge gap on environmental management and Climate Change-
- ❑ This will be done through community mobilization and awareness raising at local level. Depending on the ecosystem for survival remains their only choice
- ❑ they need to be sensitized on the risks of doing that. Training and capacity building of both staff and the community will be done, so that they effectively manage urban growth in a sustainable manner.
- ❑

# Response to Climate Change Related Challenges

---

- ❑ to protect the environment and its natural resources, create employment and provide access to clean and affordable energy to those households in need
- ❑ These initiatives which are aimed at upscaling the interventions in slum upgrading.
- ❑ Developed to build resilience for their adaptive capacity
- ❑ The identified initiative/ activities will be done in a participatory and inclusive manner to allow for community empowerment, particularly the Urban poor, who are disadvantaged.
- ❑ Community will be introduced to new methods of waste management. Shift to circular economy model
- ❑ Waste will be sorted from source to allow for re-use and recycling
- ❑ The project piloted with source from high consumers, and the recycling station be operated by the identified beneficiaries from the low income neighbourhoods

# Response to Climate Change Related Challenges

---

- ❑ Incineration of waste also pose as a challenge due to emission of smoke, and an environment friendly technology is needed to treat clinical waste, other than Incinerators.
- ❑ A number of households in the low income areas relying on firewood for cooking and heating will be sensitized on the need to switch to clean renewable energy.
- ❑ In addition to that, they will be supplied with solar lights and solar stoves
- ❑ A number of unemployed from the low income areas, rely on firewood sale as a business for income
- ❑ They will be grouped and trained on producing bio gas for business
- ❑ They will be supported to develop a communal bio gas plant
- ❑ To create a market for their product, the identified households in need of energy will be supplied with bio gas stoves.

# Actors Involved

Stakeholder/Actor	Role	Reasons
Lobatse Town Council	<ul style="list-style-type: none"><li>▪ Co-funding the Project (providing other infrastructure not covered in the budget</li><li>▪ Availing land for the project</li><li>▪ Availing Technical Staff as project overseer during project infancy stage.</li><li>▪ Community mobilization</li><li>▪ Capacity Building</li><li>▪ Assisting during machinery breakdown</li></ul> Monitoring & Evaluation	<ul style="list-style-type: none"><li>▪ Building community resilience is part of its mandate</li><li>▪ Waste Management is part of its mandate</li><li>▪ Their already existing relations with the community</li><li>▪ Some of the Technical staff are experts in the proposed action</li></ul>

# Actors Involved

Stakeholder/Actor	Role	Reasons
Botswana Institute of Innovation Technology & Research (BITRI) in partnership with UNDP	<ul style="list-style-type: none"><li>▪ Capacity Building</li></ul>	<ul style="list-style-type: none"><li>▪ They have been training people in renewable energy technology. They have been consulted and showed Interest in engaging Lobatse Town Council to roll out the program.</li></ul>

# Response to Climate Change Related Challenges

Stakeholder/Actor	Role	Reasons
Targeted beneficiaries	they will be assisting with manual work as a demonstration of ownership in the project. Providing labour and other needed manpower for the implementation and running of the project	The action is participatory and its intended objectives is to let the beneficiaries run their own projects with the idea that, they will be later impart their skills during the expansion of the scope of the project.

# Response to Climate Change Related Challenges

Stakeholder/Actor	Role	Reasons
<b>Community including mobilized slums community groups</b>	Community Mobilization by Community	Their support for the successful implementation of the action, with the hope that it will be rolled out to all the disadvantaged groups in future

# Response to Climate Change Related Challenges

Stakeholder/Actor	Role	Reasons
<b>Other National Government Departments (Department of Waste Management Pollution &amp; Control, Department of environmental Affairs, Department of Town &amp; Country Planning, Botswana Energy Regulatory Authority</b>	Providing advise Legislative advice, support for capacity building and funding for possible.	They are responsible for policy guidance

# Response to Climate Change Related Challenges

Stakeholder/Actor	Role	Reasons
<b>Gender Links</b>	<ul style="list-style-type: none"><li>▪ Business Skills Training</li><li>▪ Monitoring &amp; Evaluation</li><li>▪ Providing guidance on the use of donor funding</li></ul>	<ul style="list-style-type: none"><li>▪ The already existing relationship with Lobatse Town Council.</li><li>▪ They have trained Government program beneficiaries in business management skills.</li></ul>

# Financing Adaptation & Mitigation

---

- ❑ Funding for the proposed actions remains a challenge
- ❑ Government remains the only available source of funding- which at most time is responsive adaptation
- ❑ LTC is exploring available options for funding
- ❑ Submitted a concept note to European Commission, approved and full costed proposal submitted for possible funding
- ❑ Working on the concept notes for Small Grants Programme from GEF
- ❑ Development Control is embedded in routine Council Work
- ❑ Destitute Housing Programme implemented as part of the Destitute programme
- ❑ Small scale waste recycling as part of Poverty Eradication programme

# Financing Adaptation & Mitigation



Approved concept note for funding



Goods produced from recycled waste



A house built under the destitute programme

# Outcomes & Future Improvements

---

- ❑ Project implementation modalities are still being worked on, so that upon funding implementation starts
- ❑ Once completed: low income households will have access to clean renewable energy for cooking and lighting
- ❑ Deforestation will be reduced
- ❑ Learning will be enhanced, as children from these households will be able to study late night
- ❑ Up-csaling of waste management and setting up of communal bio gas plants will create employment as building adaptive capacity

# Lessons Learnt

---

- ❑ Lack of Climate Change policies for Local Governments hampers the Local Authorities efforts of upscaling Climate Change Action
- ❑ Actions available often focus on bigger cities even though the inhabitants of both cities, urban and Villages experience the same challenges
- ❑ Climate Change response is often responsive adaptation after climate change related disasters
- ❑ Centralized Local Governance limits the Local Authorities capacity and autonomy to negotiate for funding
- ❑ If funded, LTC will be able to implement most of the actions and build its communities resilience
- ❑ The success of the Pilot project will allow for roll out to cover the whole town
- ❑ Looking for more opportunities for funding & collaboration to effectively implement its 'Climate Smart Town' initiative

---

These are the kgotla and the Village Development Committees (VDCs).